

# Vantage Instruction Manual

## Database Server

Configs and Events

written by

Shane Kohler

*Shane.Kohler@IMSeismology.org*

of



institute  
of mine  
seismology

Thursday, September 22, 2016

IMS Document Number:

DatabaseServer\_IMS-VANTAGE-DOC-201609-SJKv0

# 1. Introduction

The purpose of this document is to provide instructions on how to use IMS Database Servers to update local configs and to import events into Vantage projects. The accuracy of the information is subject to the changing software. This document was last updated on Thursday, September 22, 2016. For the latest version please visit:

<http://software.imseismology.org/documents/vantage/>

## 2. IMS Database Server

The IMS Database server provides remote users with access to the latest configuration files and access to the event database. Registering an IMS Database Server can be done by scanning the local network for servers or by manually entering the server's details. Both methods require that the “Servers” window be open. This can be done by selecting “Window” → “Servers”.

### *Detecting Database Servers on the Local Network*

IMS Vantage can scan the local network and detect available database servers. This can be done by right-clicking inside the “Servers” window → “Detect Servers” (shown in Figure 1).

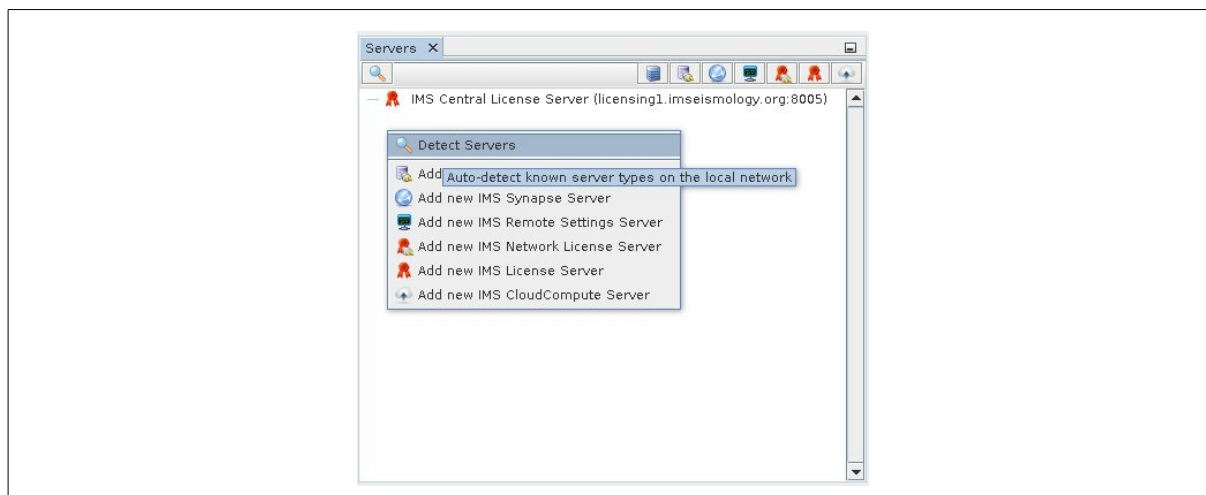


Figure 1: Using Vantage to detect servers on the local network.

Select one or more database servers from the list and click “OK” (shown in Figure 2). The selected databases will be added to the list of database servers in the “Servers” window.

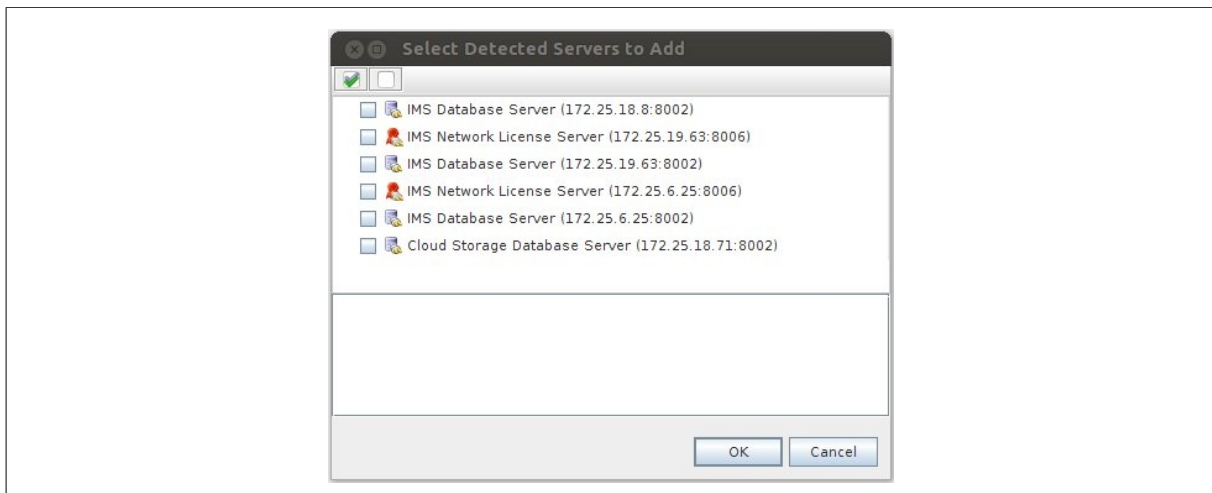


Figure 2: List of detected servers on the local network.

### Manual Registration

The IMS Database Server can be registered manually if the IP and port number are known. This can be done by right-clicking inside the “Servers” window → “Add new IMS Database Server” (shown in Figure 3).

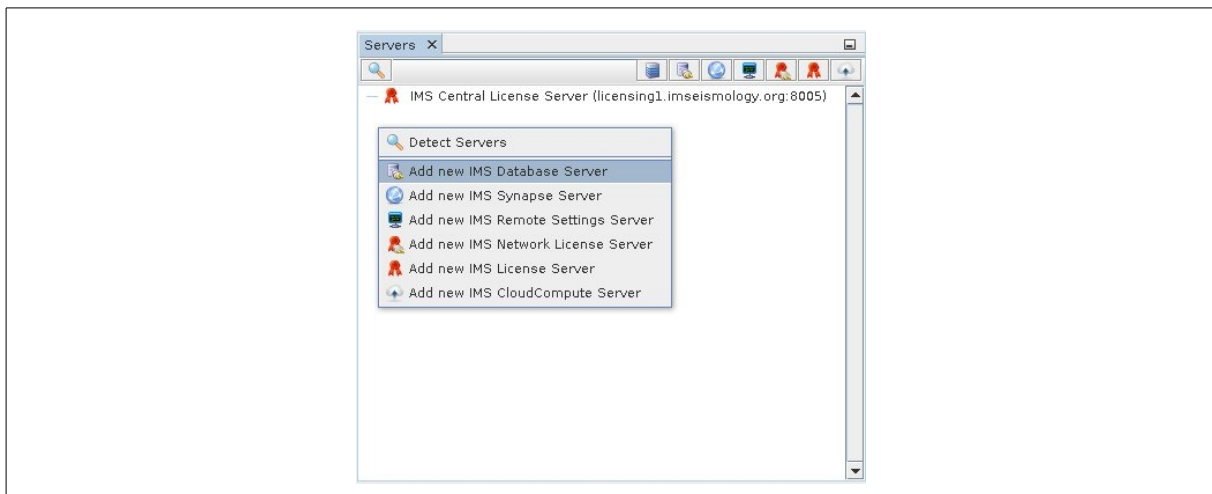


Figure 3: Manually registering an IMS Database Server.

Follow the on-screen instructions (shown in Figure 4) to complete the registration process. The registered database will be added to the list of available databases in the “Servers” window.

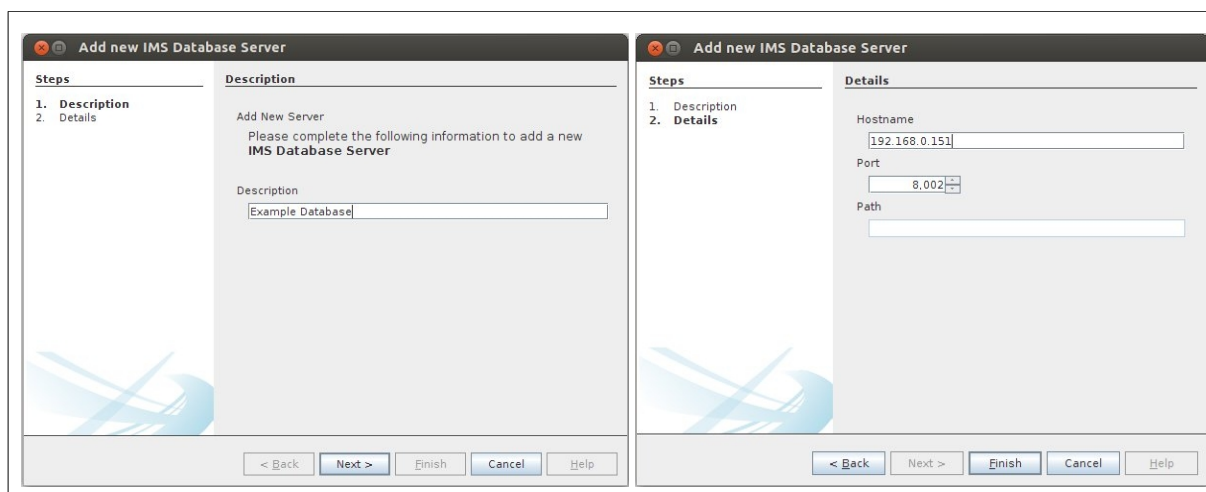


Figure 4: On-screen instructions for registering an IMS Database Server with a known IP address and port number.

### 3. Configs

Configuration files, or config files, are used to store the core information of a mine in one single, shared place on an IMS Database Server. The config files store important information, e.g. mine plans and site/sensor information etc., that can be used to automatically populate a new Vantage project. A copy of the configs is stored on the computer running Vantage, reducing the overhead of accessing files over the network. It is, however, important to have an up-to-date copy of the configs, therefore it is recommended that configs are down-synced through an IMS Database Server in Vantage.

#### **Downsync Configs**

A remote IMS Database Server is required to downsync configs. The available servers are listed in the “Servers” window (accessed by “Window” → “Servers”). To access the “Config Synchronisation Settings” window click on “Tools” → “Downsync configs from” → select an IMS Database Server from the available list (shown in Figure 5).

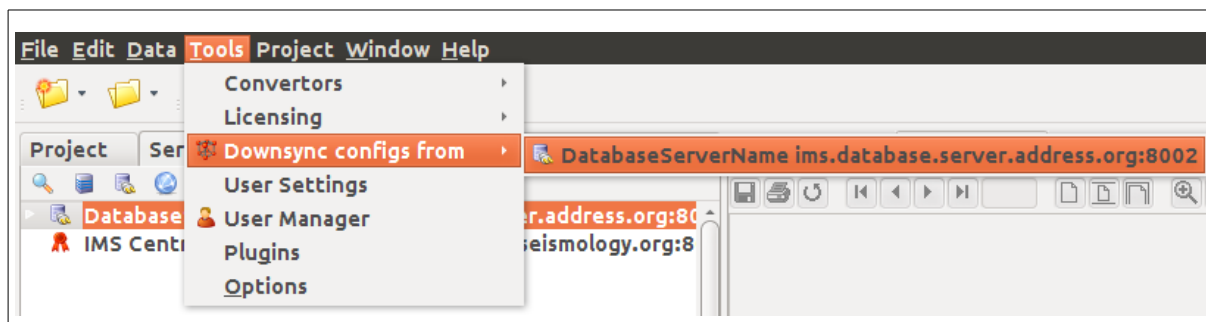


Figure 5: How to downsync config files from an IMS Database Server in Vantage.

All configs that require updating can be selected in this window (shown in Figure 6). The items listed under

“Network” are mine specific, while the “Global” items are more general. Clicking “OK” will initiate the syncing process.

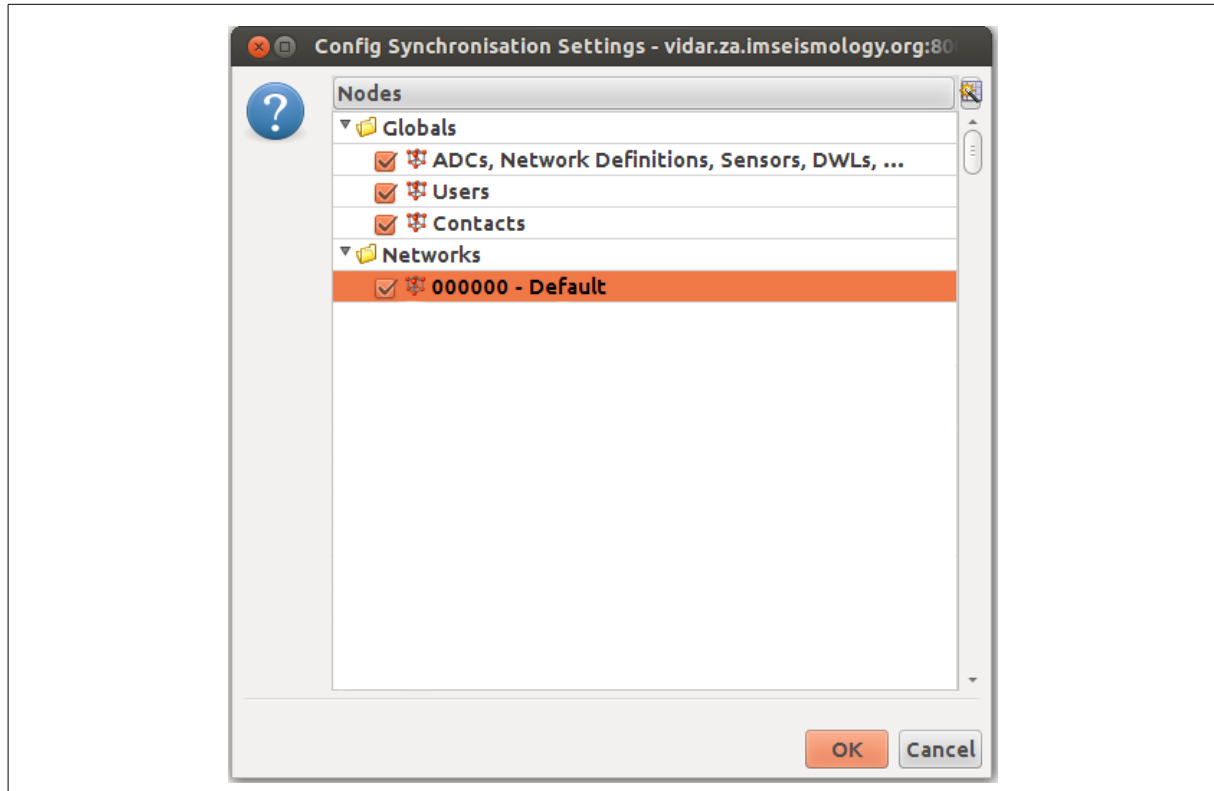


Figure 6: Dialogue for setting which config files to sync from the IMS Database Server.

The progress will be displayed in the status bar while it is busy syncing the config files (shown in Figure 7).

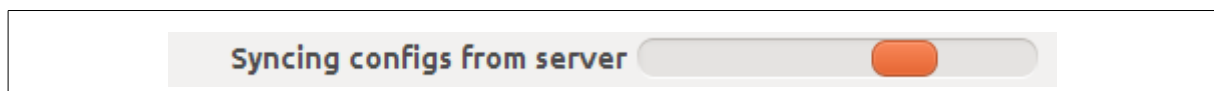


Figure 7: Progress bar in the statusbar indicating that config files are busy downsyncing from the IMS Database Server.

Alternatively, one can right-click on the IMS Database Server in the “Servers” window and select “Downsync Configs” (shown in Figure 8).

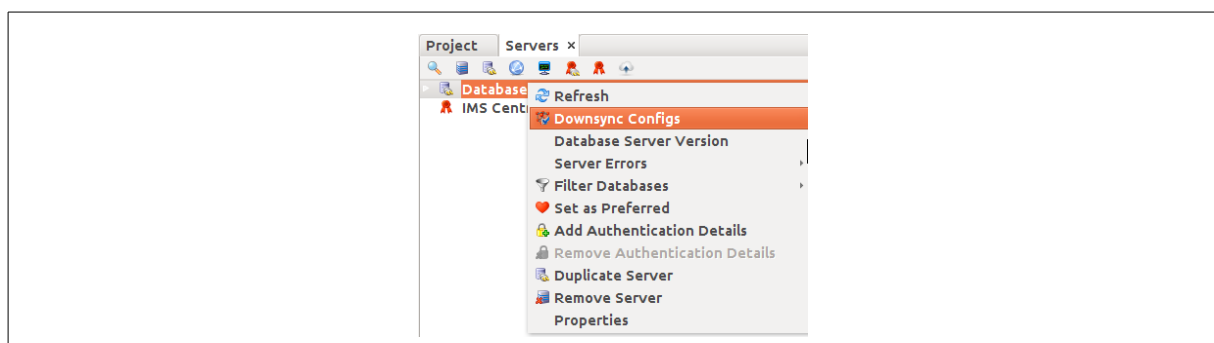


Figure 8: How to downsync config files from an IMS Database Server in Vantage via the “Servers” window.

## 4. Importing Events

### *Remote IMS Database*

Initiating the event importing process is started by right-clicking on the project or a folder → Import → Events → Remote IMS Database (shown in Figure 9).

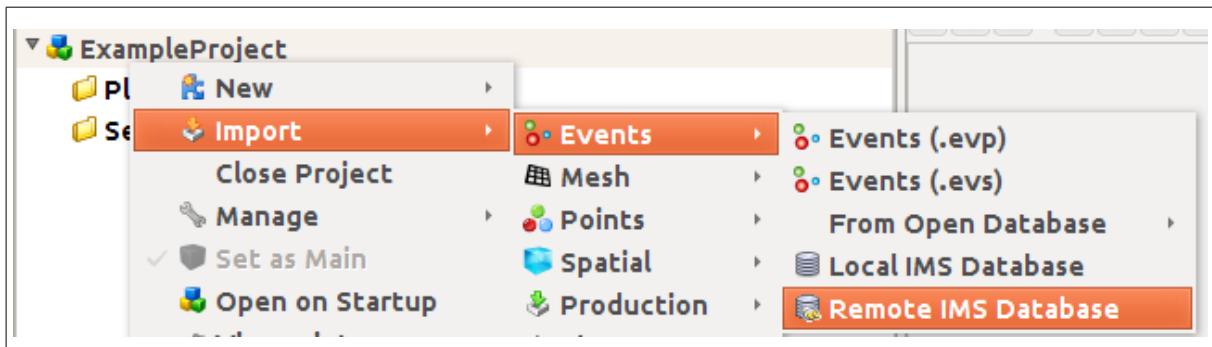


Figure 9: Importing events from a remote IMS Database on an IMS Database Server.

A dialogue will prompt the user to select an IMS database associated with one of the available IMS Database Servers (shown in Figure 10).

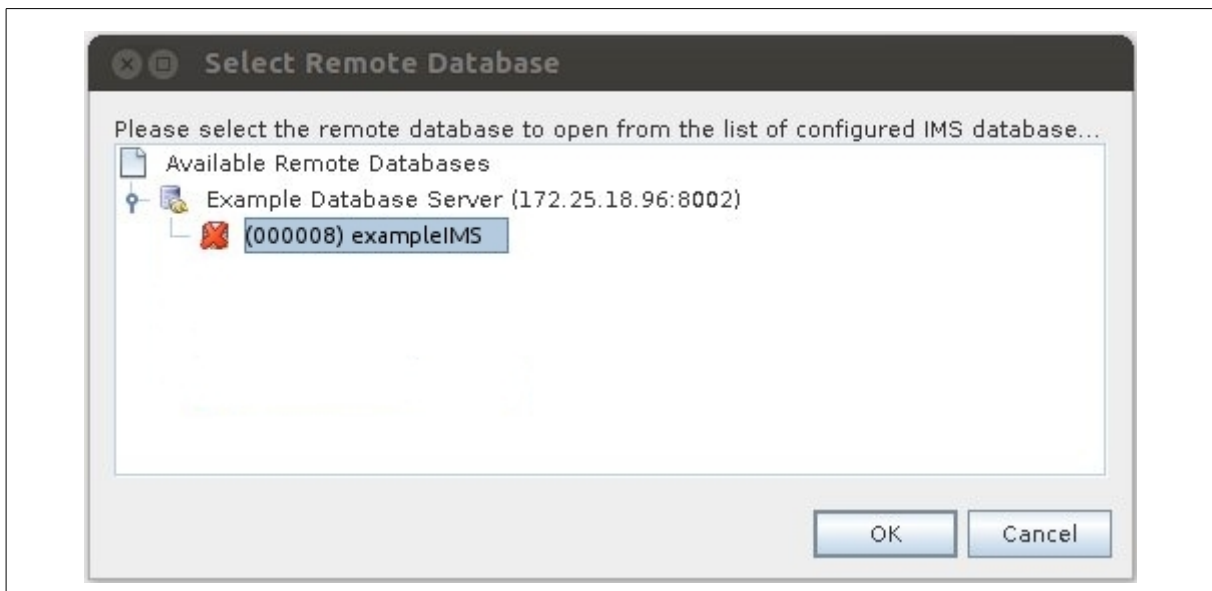


Figure 10: Selecting an IMS Database from the available IMS Database Servers from which to import events.

The last dialogue will prompt the user to select a time period from which to import the events (shown in Figure 11). The user may import all events stored in the database or may specify an initial date to import events from. Clicking the “OK” button will start the importing process.

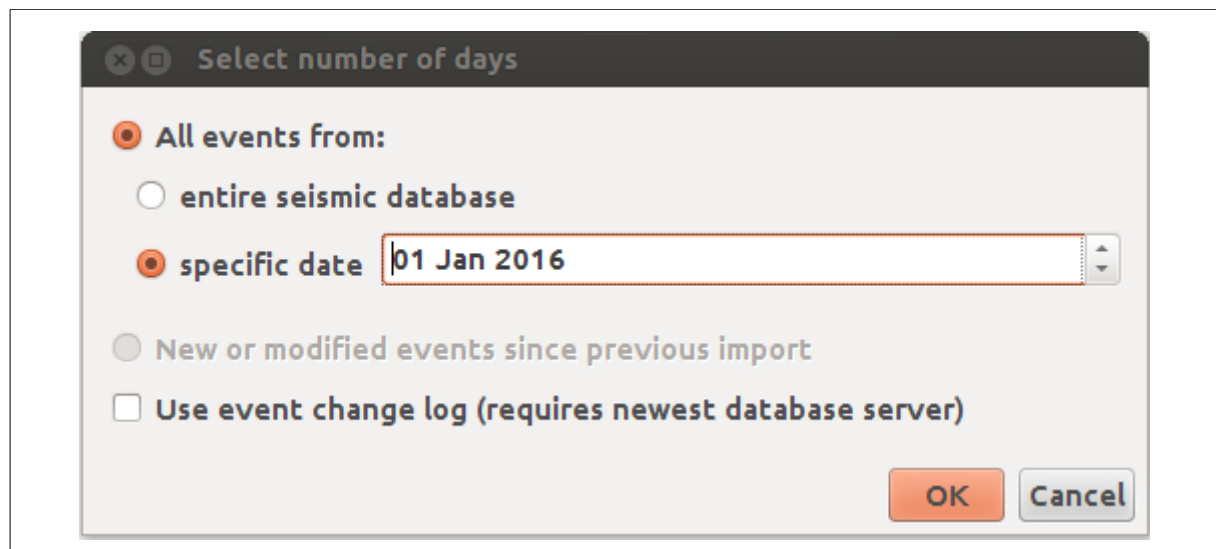


Figure 11: Event time range dialogue.